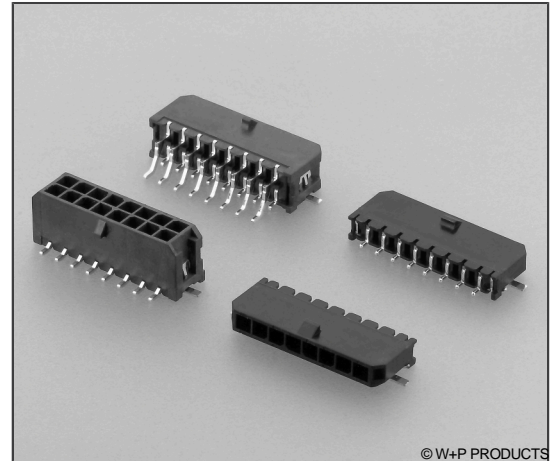


## SMT-Crimp-Rast-Stiftleisten RM 3,00mm, stehend/liegend, 1-/2-reihig SMT Friction Lock Headers, 3.00mm Pitch, Vertical/Horizontal, Single/Double Row

### Technische Daten / Technical Data

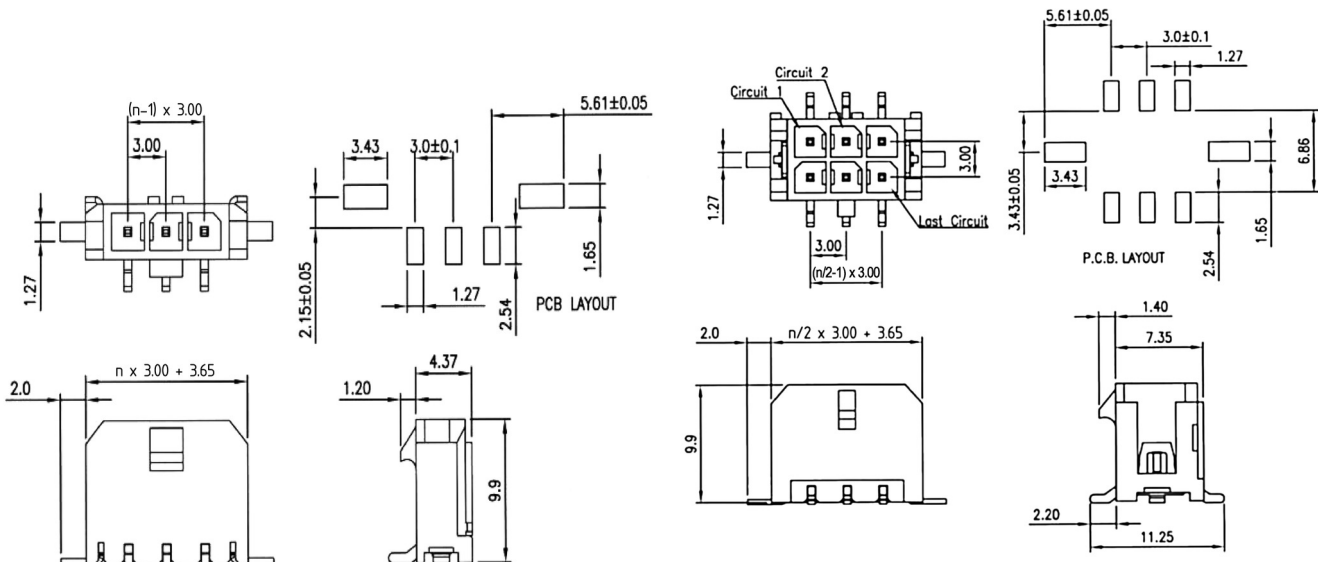
|                       |  |
|-----------------------|--|
| Isolierkörper         | Thermoplast, nach UL94 V-0                           |
| Insulator             | Thermoplastic, rated UL94 V-0                        |
| Kontaktmaterial       | Kupferlegierung, Vierkantstift 0.64mm                |
| Contact Material      | Copper alloy, 0.64mm square pin                      |
| Kontaktoberfläche     | Lt. Oberflächenoptionen, über Ni (1,3 ... 2,5µm)     |
| Contact Surface       | Acc. to options (see below), over Ni (1.3 ... 2.5µm) |
| Durchgangswiderstand  | < 10 mΩ  |
| Contact Resistance    | < 10 mΩ  |
| Isolationswiderstand  | > 1000 MΩ  |
| Insulation Resistance | > 1000 MΩ  |
| Spannungsfestigkeit   | 1,5 kV AC  |
| Test Voltage          | 1.5 kV AC  |
| Nennspannung          | 250 V AC   |
| Voltage Rating        | 250 V AC   |
| Nennstrom             | 5 A  |
| Current Rating        | 5 A  |
| Temperaturbereich     | -25 °C ... +85 °C                                    |
| Temperature Range     | -25 °C ... +85 °C                                    |
| Verarbeitung          | Reflow-Lötverfahren                                  |
| Processing            | Reflow soldering                                     |



© W+P PRODUCTS

Passende Gegenstecker:  
Compatible Connectors:

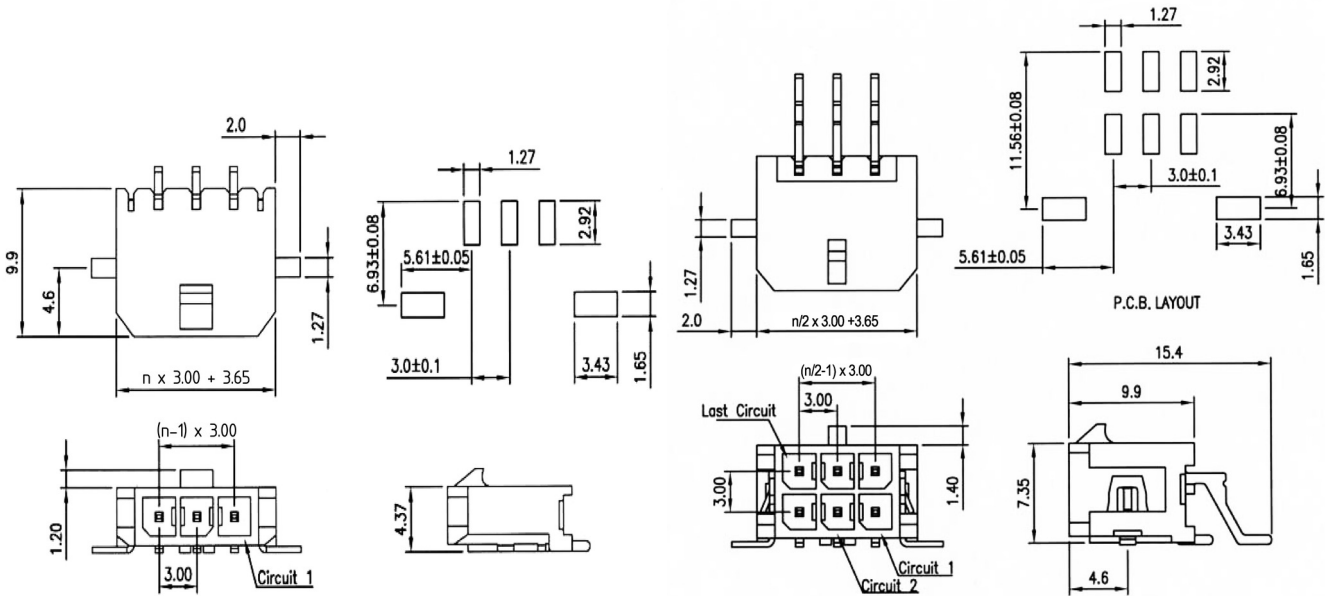
583



|               |   |   |                           |                   |
|---------------|---|---|---------------------------|-------------------|
| <b>Series</b> | <b>Contacts*</b>  | <b>Type</b>   | <b>Plating</b>            | <b>Packaging*</b> |
| <b>5830</b>   | <b>06</b>   | <b>2</b>  | <b>50</b>                 | <b>PPTR</b>       |
|               | 02-12 Einreihig<br>Single row<br>02-24 Zweireihig<br>Double row | 1 Einreihig stehend<br>Single row, vertical<br>2 Zweireihig stehend<br>Double row, vertical | 50 Verzinkt<br>Tin plated | TR<br>PPTR        |

# 5830

SMT-Crimp-Rast-Stiftleisten RM 3,00mm, stehend/liegend, 1-/2-reihig  
 SMT Friction Lock Headers, 3.00mm Pitch, Vertical/Horizontal, Single/Double Row



| Series      | Contacts*  | Type*   | Plating                                | Packing*                  |
|-------------|--|---|--|---------------------------|
| <b>5830</b> | <b>12</b><br>02-12 Einreihig<br>Single row<br>02-24 Zweireihig<br>Double row | <b>3</b><br>3 Einreihig liegend<br>Single row, horizontal<br>4 Zweireihig liegend<br>Double row, horizontal | <b>50</b><br>50 Verzinnt<br>Tin plated | <b>PPTR</b><br>TR<br>PPTR |

\* Dies ist ein **Bestellbeispiel** - bitte durch Ihre Spezifikationen ersetzen.  
 \* This is an **order example** - please replace by your specifications.

**Lieferformen / Packaging Options:**

**TR** Tape & Reel ohne PP-Pads (Option) / *Tape & Reel ohne PP-Pads (Option)*  
**PPTR** Tape & Reel mit PP-Pads (Option) / *Tape & Reel with PP-Pads (Option)*

### Reflow-Lötempfehlung für kurze Lötzeiten

Die Bauteile sollten gemäß folgendem Temperatur-Profil in Anlehnung an die IPC/JEDEC J-STD-020C für bleifreies Löten im Reflow-Verfahren verarbeitet werden (Maximalwerte).

| Profileigenschaft                    | Kennwert      |
|--------------------------------------|---------------|
| Temperatur Minimum $T_{Smin}$        | 150 °C        |
| Temperatur Maximum $T_{Smax}$        | 200 °C        |
| Dauer $T_{Smin} - T_{Smax}$          | 60 – 180s     |
| Temperatur Lötbereich $T_L$          | 217 °C        |
| Verweildauer oberhalb $T_L$          | 60 – 180s     |
| Ramp-Up Rate $T_{Smax} - T_P$        | max. 3 °C / s |
| Höchsttemperatur $T_P$               | 260±5 °C      |
| Dauer Höchsttemperatur               | 20 – 40s      |
| Ramp-Down Rate $T_{Pmax} - T_{Smin}$ | 6 °C / s      |
| Dauer 25 °C – Höchsttemperatur $T_P$ | max. 8m       |

### Reflow Soldering Recommendation For Shorter Peak Times

Items should be soldered according to IPC/JEDEC J-STD-020C temperature profile for leadfree reflow soldering (maximum values).

| Profile Feature                      | Key Values    |
|--------------------------------------|---------------|
| Minimum Temperature $T_{Smin}$       | 150 °C        |
| Maximum Temperatur $T_{Smax}$        | 200 °C        |
| Duration $T_{Smin} - T_{Smax}$       | 60 – 180s     |
| Soldering Range Temperature $T_L$    | 217 °C        |
| Duration above $T_L$                 | 60 – 180s     |
| Ramp-Up Rate $T_{Smax} - T_P$        | max. 3 °C / s |
| Peak Temperature $T_P$               | 260±5 °C      |
| Duration Peak Temperature            | 20 – 40s      |
| Ramp-Down Rate $T_{Pmax} - T_{Smin}$ | 6 °C / s      |
| Duration 25°C - Peak Temp. $T_P$     | max. 8min     |

