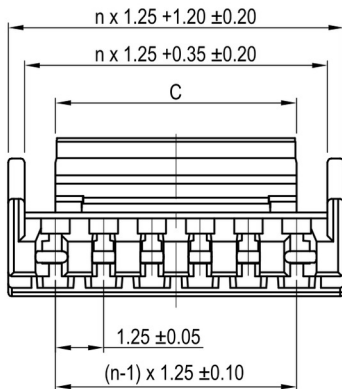
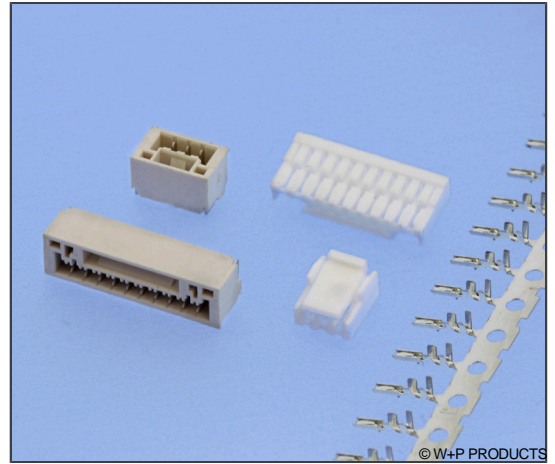


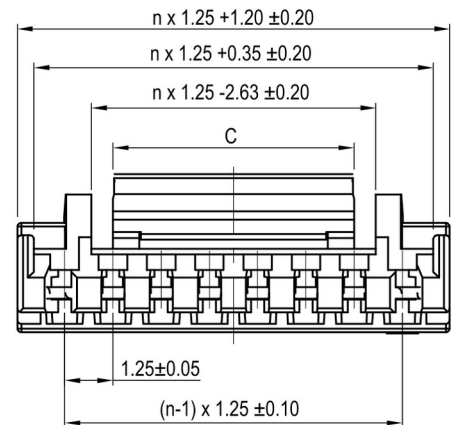
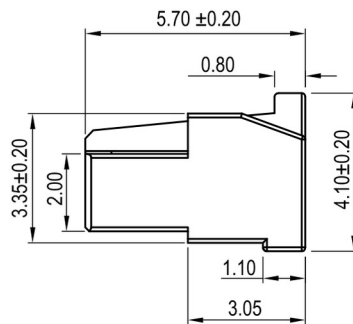
## SMT-Crimp-Rast-Stift-/Buchsenleisten RM 1,25mm – mit Verriegelung SMT Friction Lock Headers / Crimp Housings, 1.25mm Pitch – with Lock

### Technische Daten / Technical Data

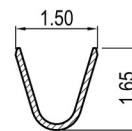
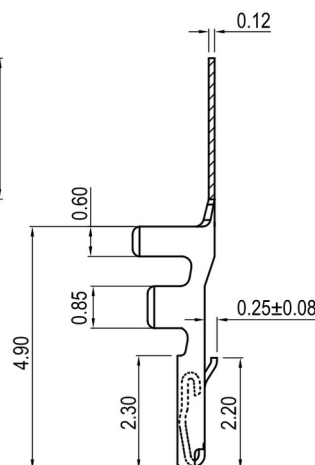
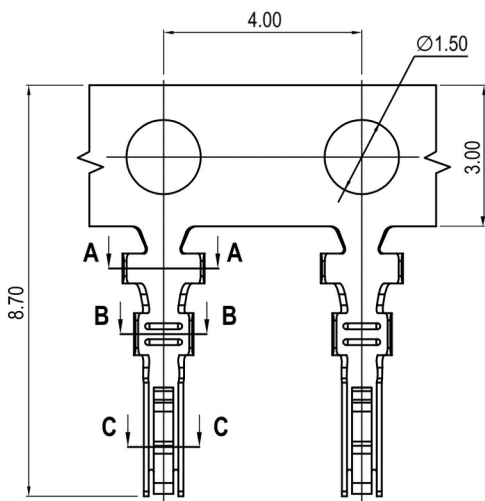
Isolierkörper <i>Insulator</i>	Thermoplast, nach UL94 V-0 <i>Thermoplastic, rated UL94 V-0</i>
Farbe <i>Colour</i>	Gehäuse: Weiß, Wann: Beige <i>Housings: White, box headers: Beige</i>
Kontaktmaterial <i>Contact Material</i>	Kupferlegierung <i>Copper alloy</i>
Aderquerschnitt <i>Applicable wire Gauge</i>	AWG 30 ~ 26 <i>AWG 30 ~ 26</i>
Durchgangswiderstand <i>Contact Resistance</i>	< 30 mΩ <i>&lt; 30 mΩ</i>
Isolationswiderstand <i>Insulation Resistance</i>	> 100 MΩ <i>&gt; 100 MΩ</i>
Spannungsfestigkeit <i>Test Voltage</i>	500 V AC <i>500 V AC</i>
Nennspannung <i>Voltage Rating</i>	50 V AC/DC <i>50 V AC/DC</i>
Nennstrom <i>Current Rating</i>	1 A <i>1 A</i>
Temperaturbereich <i>Temperature Range</i>	-25 °C ... +85 °C <i>-25 °C ... +85 °C</i>
Verarbeitung <i>Processing</i>	260 °C für 10s max. <i>260 °C for 10s max.</i>



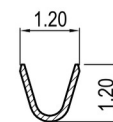
**02-07 Contacts**



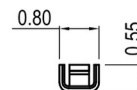
**08-15 Contacts**



**A-A**



**B-B**



**C-C**

n	C
02	1.95
03	3.20
04/05	4.20
06-09	6.25
10-15	8.15

Series

**5650**

Contacts\*

**01**

02-15 Für Buchsengehäuse  
*For housings*  
01 Für Buchsenkontakte  
*For crimp terminals*

Type\*

**2**

1 Gehäuse für Buchsenkontakte  
*Housing for female terminals*  
2 Buchsenkontakte  
*Female crimp terminals*

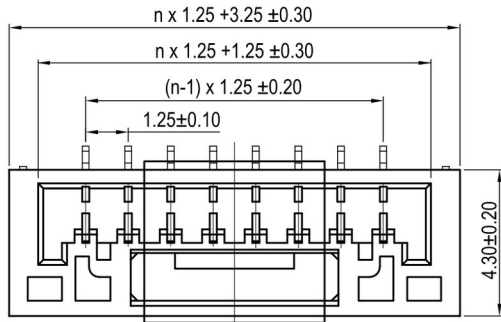
Plating\*

**50**

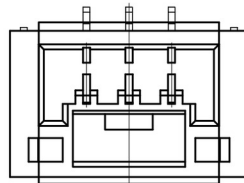
50 Sn (bei Gehäusen nicht erforderlich)  
*Sn (for housings not needed)*

# 5650

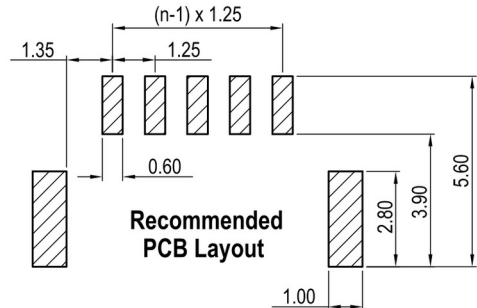
**SMT-Crimp-Rast-Stift-/Buchsenleisten RM 1,25mm – mit Verriegelung**  
**SMT Friction Lock Headers / Crimp Housings, 1.25mm Pitch – with Lock**



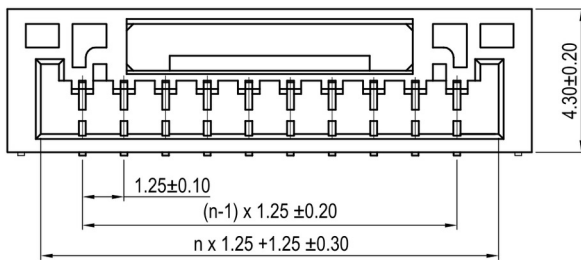
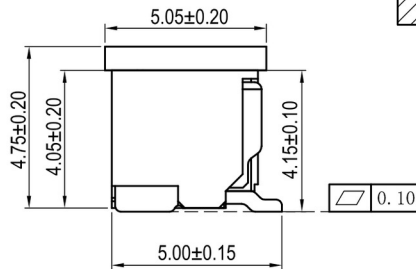
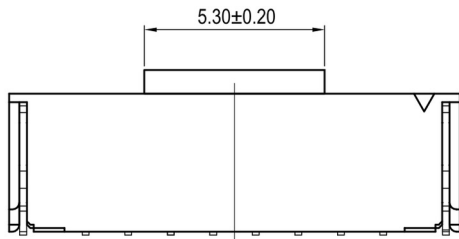
**08-15 pins**



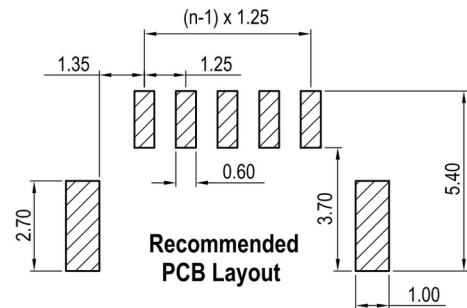
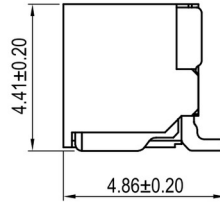
**02-07 pins**



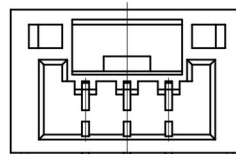
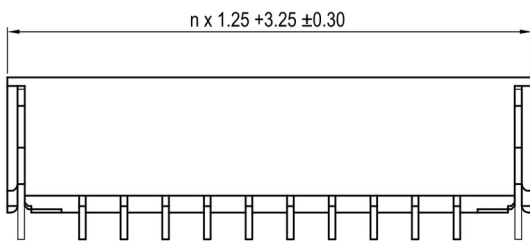
**Recommended PCB Layout**



**08-15 pins**



**Recommended PCB Layout**



**02-07 pins**

**Series**

**5650**

**Contacts\***

**05**

02-15

**Type\***

**3**

3 Stiftleiste stehend  
 Pin header vertical  
 4 Stiftleiste liegend  
 Pin header horizontal

**Plating\***

**50**

50 Sn

**Packaging\***

**PPTR**

PPTR  
 TR

\* Dies ist ein **Bestellbeispiel** - bitte durch Ihre Spezifikationen ersetzen.  
 \* This is an **order example** - please replace by your specifications.

**Lieferformen / Packaging Options:**

**PPTR** Type 3: Tape & Reel mit Pick & Place-Pad / Tape & Reel with Pick & Place-Pad  
**TR** Type 4: Tape & Reel ohne Pick & Place-Pad / Tape & Reel w/o Pick & Place-Pad