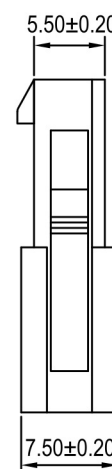
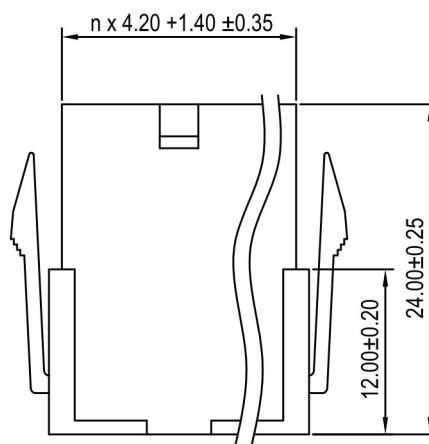
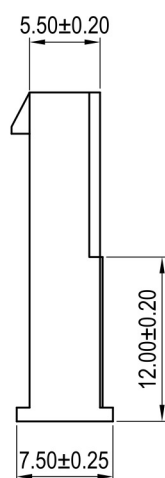
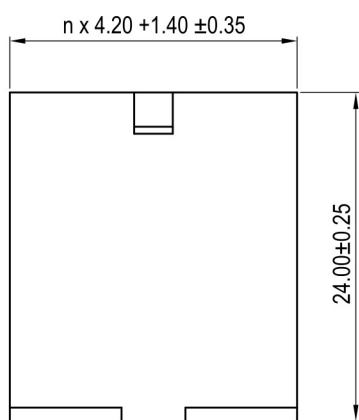
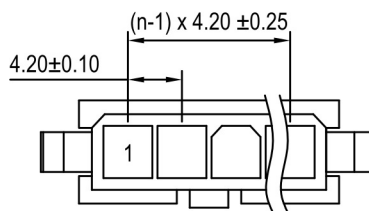
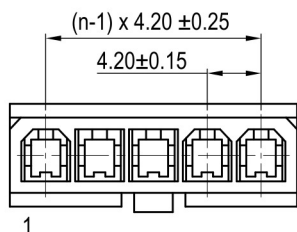
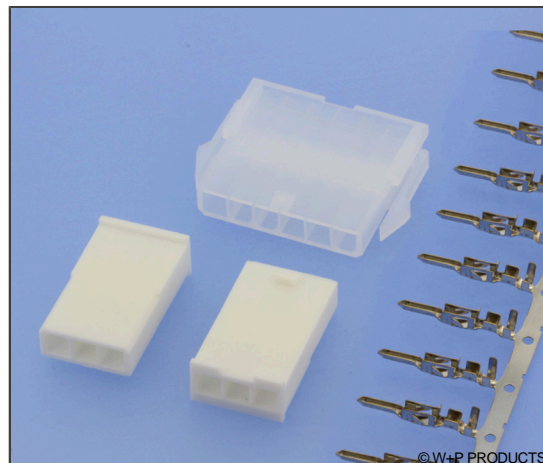


## Crimp-Rast-Stiftgehäuse & Stiftkontakte, 1-reihig, RM 4,20mm Friction Lock Male Housing & Contacts, Single Row, 4.20mm Pitch

### Technische Daten / Technical Data

Isolierkörper <i>Insulator</i>	Thermoplast, UL94 V-2 (-0: UL94 V-0) <i>Thermoplastic, UL94 V-2 (-0: UL94 V-0)</i>
Kontaktmaterial <i>Contact Material</i>	Kupferlegierung <i>Copper alloy</i>
Kontaktoberfläche <i>Contact Surface</i>	Lt. Oberflächenoptionen, über Ni <i>Acc. to options (see below), over Ni</i>
Aderquerschnitt <i>Applicable wire Gauge</i>	AWG 24 ~ 20 <i>AWG 24 ~ 20</i>
Durchgangswiderstand <i>Contact Resistance</i>	< 20 mΩ <i>&lt; 20 mΩ</i>
Isolationswiderstand <i>Insulation Resistance</i>	> 1000 MΩ <i>&gt; 1000 MΩ</i>
Spannungsfestigkeit <i>Test Voltage</i>	1,5 kV AC <i>1.5 kV AC</i>
Nennspannung <i>Voltage Rating</i>	600 V AC/DC <i>600 V AC/DC</i>
Nennstrom <i>Current Rating</i>	7 A AC/DC <i>7 A AC/DC</i>
Temperaturbereich <i>Temperature Range</i>	-25 °C ... +85 °C <i>-25 °C ... +85 °C</i>



#### Series

**547**

#### Contacts\*

**05**

02-06 Einreihig  
Single row

#### Type\*

**05**

05 Gehäuse für Stiftkontakte  
Housing for male terminals  
11 Gehäuse für Stiftkontakte, mit Laschen  
Housing for male terminals, with latches

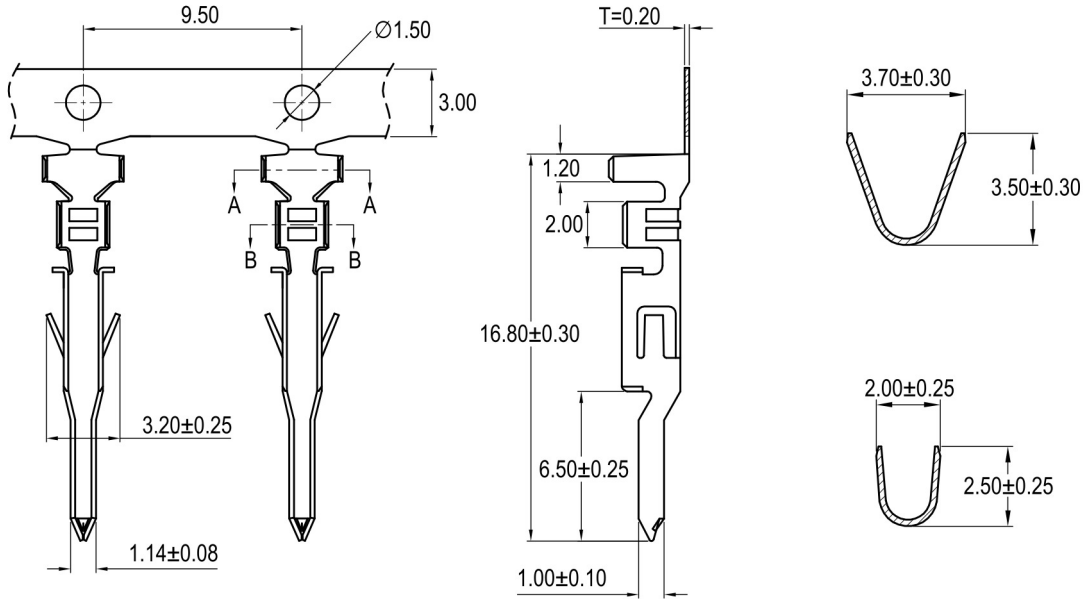
#### Material\*

**..**

[..] UL94 V-2 (Standard)  
0 UL94 V-0

# 547

## Crimp-Rast-Stiftgehäuse & Stiftkontakte, 1-reihig, RM 4,20mm Friction Lock Male Housings & Contacts, Single Row, 4.20mm Pitch



Series

**544**

Contacts

**01**

01 Für Crimp-Kontakte  
For crimp terminals

Type

**06**

06 Stiftkontakte  
Male terminals

Plating\*

**50**

00 Vergoldet  
Gold plated  
50 Verzinkt  
Tin plated

\* Dies ist ein **Bestellbeispiel** -  
bitte durch Ihre Spezifikationen ersetzen.  
\* This is an **order example** -  
please replace by your specifications.