

646

Mini Din Verbinder - Buchse / Stecker - ohne Gehäuse / mit Gehäuse

Mini Din Jack - Female / Male - Molded Type / Assembly Type

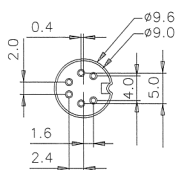
Technische Daten / Technical Data

Isolierkörper <i>Insulator</i>	Thermoplastischer Kunststoff, nach UL94V0 <i>Thermoplastic, rated UL94V0</i>
Kontaktmaterial <i>Contact Material</i>	Phosphorbronze <i>Phosphor Bronze</i>
Kontaktfläche <i>Contact Surface</i>	lt. Oberflächenoptionen, über Ni (1,3-2,5 µm) <i>acc. to options (see below), over Ni (1,3-2,5 µm)</i>
Lötbarkeit <i>Solderability</i>	IEC512-12A
Durchgangswiderstand <i>Contact Resistance</i>	≤ 15 mOhm
Isolationswiderstand <i>Insulation Resistance</i>	> 10 ⁹ Ohm
Spannungsfestigkeit <i>Test voltage</i>	500 V _{DC}
Nennstrom <i>Current Rating</i>	1 A
Temperaturbereich <i>Temperature Range</i>	-55°C...+105°C
Verarbeitung <i>Processing</i>	Wellen-Lötverfahren; weitere Informationen in Kapitel T <i>Wave-Soldering, further informations in Chapter T</i>

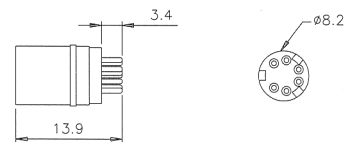
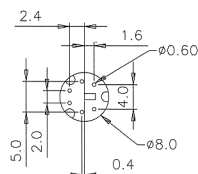
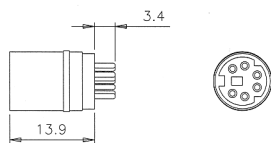


© W+P PRODUCTS

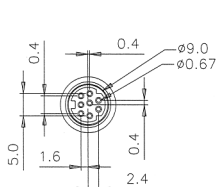
Passender Gegenstecker Serie:
Mates with Connector Series:
645 (Female)



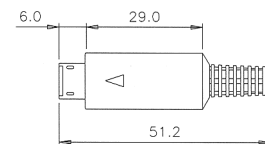
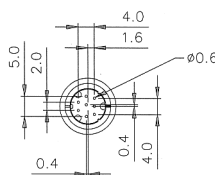
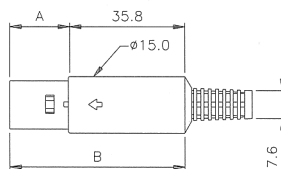
Molded Type (Female)



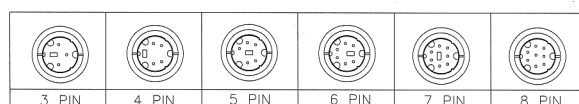
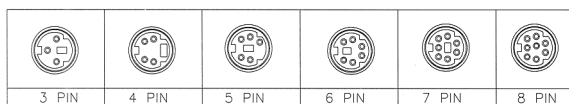
Molded Type (Male)



Assembly Type (Female)



Assembly Type (Male)



Assembly Type		
Contact	A	B
3P (Female)	20,5	72,0
4P (Female)	19,3	71,0
5P (Female)	12,0	63,5
6P (Female)	12,5	64,0
7P (Female)	12,0	63,5
8P (Female)	15,8	67,5

Series **646** Contacts* **03** Type* **1** Plating **50**

03/04/05/06/07/08-pol.

- 1 = Stecker ohne Gehäuse
male molded type
- 2 = Stecker mit Gehäuse
male assembly type
- 3 = Buchse ohne Gehäuse
female molded type
- 4 = Buchse mit Gehäuse
female assembly type

50 = verzinkt
tin plated

Andere Veredelungen auf Anfrage
Other Platings upon Request

(* Bestellbeispiel - Bitte durch Ihre Spezifikationen ersetzen.
* Order example - To be replaced by your specifications.)

Wellen-Lötverfahren Wave-Soldering

Bauteile sollten bei 260°C für max. 5 Sekunden verarbeitet werden.
Items should be soldered at 260°C for max. 5 seconds.

Empfohlenes Wellen-Lötprofil:
Recommended Wave-Soldering profile:

