

# 599

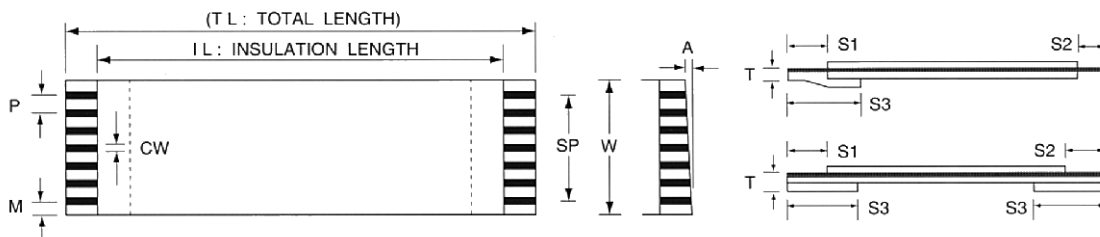
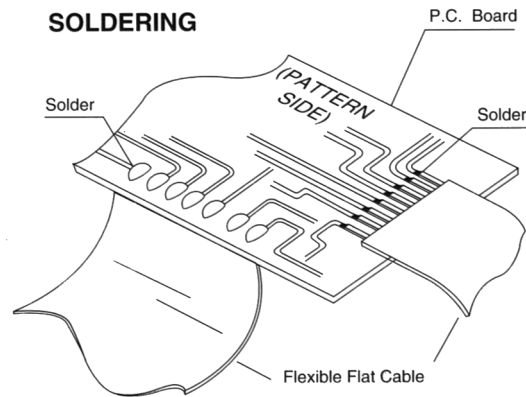
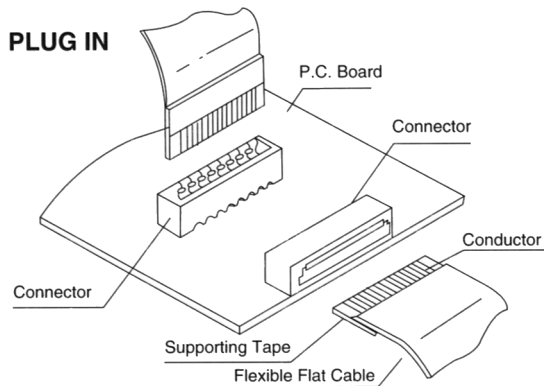
## Flex-Kabel - RM 0,30-2,54 mm

Flexible Flat Cable - Pitch 0,30-2,54 mm

### Technische Daten / Technical Data:

|                       |   |
|-----------------------|---|
| Durchgangswiderstand  | ≤ 30 mOhm   |
| Contact Resistance    | ≤ 30 mOhm   |
| Isolationswiderstand  | > 10 <sup>8</sup> Ohm   |
| Insulation Resistance | > 10 <sup>8</sup> Ohm   |
| Spannungsfestigkeit   | 500 V <sub>DC</sub>   |
| Test Voltage          | 500 V <sub>DC</sub>   |
| Nennspannung          | 50 V <sub>AC</sub>  |
| Current Voltage       | 50 V <sub>AC</sub>  |
| Temperaturbereich     | -20°C...+80°C (hochtemperaturbeständige Ausführung bis 105°C auf Anfrage) |
| Temperature Range     | -20°C...+80°C (High Temperature Version up to 105°C available on request) |

© W+P PRODUCTS



| Abmessungen / Dimensions | P        | W      | SP     | M        | IL      | TL       | S1      | S2      | S3     | A        | T         |
|--------------------------|----------|--------|--------|----------|---------|----------|---------|---------|--------|----------|-----------|
| Bandbreite / Range       | 0,5-2,54 | P(n+1) | P(n-1) | 0,5-2,54 | min. 30 | IL+S1+S2 | 3,0-6,0 | 2,0-6,0 | 5,0-20 | 0        | 0,27-0,32 |
| Toleranz / Tolerance     | ± 0,1    | ± 0,3  | ± 0,3  | ± 0,2    |         |          | ± 1,0   | ± 1,0   | ± 2,0  | max. 0,5 | ± 0,05    |

### Series

599

### Pitch\*

1

- Raster  
Pitch  
1 = 0,50  
2 = 0,80  
3 = 1,00  
4 = 1,25  
5 = 1,27  
6 = 2,00  
7 = 2,54  
8 = 0,30

### Contacts\*

38

02-40 pol.

### Length\*

100

Länge Isolierung (IL) in mm  
Length of insulation (IL) in mm

### Type\*

B

Kabeltyp  
Cable Type  
A = Type A  
B = Type B  
C = Type C  
D = Type D

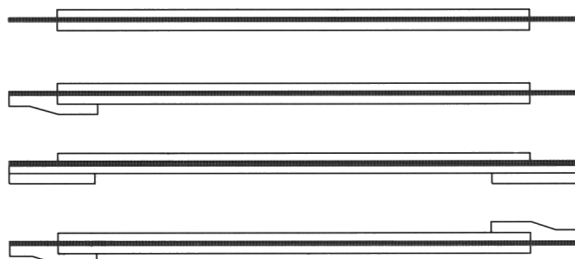
(\* Bestellbeispiel - Bitte durch Ihre Spezifikationen ersetzen.  
\* Order example - To be replaced by your specifications.)

TEL.: +49 5223 98507-0  
FAX : +49 5223 98507-50

**W+P PRODUCTS**

E-MAIL: sales@wpro.com  
INTERNET: www.wpro.com

#### Aufbau / Configuration



#### Kabeltypen / Cable Types

Type A

Type B

Type C

Type D

| Leiterbahnausführungen / Conductor Types |                   |       |       |       |       |       |       |       |       |
|--|-------------------|-------|-------|-------|-------|-------|-------|-------|-------|
| Ausführung / Type                        | Raster / Pitch    | 0,30  | 0,50  | 0,80  | 1,00  | 1,25  | 1,27  | 2,00  | 2,54  |
| B / C / D                                | Dicke / Thickness | -     | 0,100 | 0,100 | 0,100 | 0,100 | 0,100 | 0,100 | 0,100 |
|  | Breite / Width    | 0,050 | -     | -     | -     | 0,050 | 0,050 | 0,050 | -     |
|  |                   | -     | 0,035 | 0,035 | 0,035 | 0,035 | -     | -     | -     |
| A  | Dicke / Thickness | 0,200 | 0,300 | 0,500 | 0,650 | 0,800 | 0,800 | 0,800 | 1,270 |
|  | Breite / Width    | -     | -     | -     | 0,100 | 0,100 | 0,100 | 0,100 | 0,100 |

**S1\* / S2\* / S3\***

**5/5/10**

**S1** = absolute Länge  
Length of conductor opening  
**S2** = absolute Länge  
Length of conductor opening  
**S3** = Länge des Stützbandes  
Length of supporter tape

5 mm / 5 mm / 10 mm  
(Standard)

**Thickness\***

**1**

Dicke der Leiterbahn  
Thickness of Conductor  
**1** = 0,100  
**2** = 0,050  
**3** = 0,035

**Width\***

**1**

Breite der Leiterbahn  
Width of Conductor  
**1** = 0,300  
**2** = 0,500  
**3** = 0,650  
**4** = 0,800  
**5** = 1,270  
**6** = 0,200