

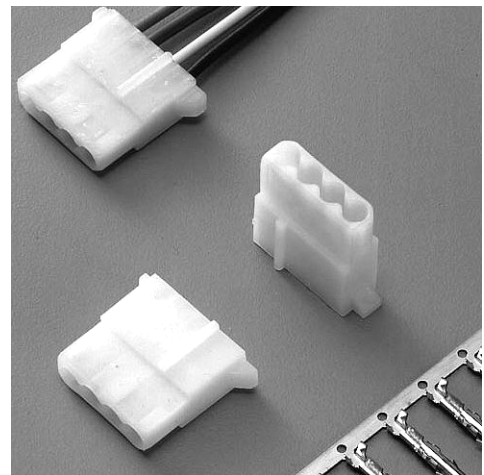
# 539

## Power Supply - Steckverbinder - RM 5,08 mm

Power Supply-Connector - Pitch 5,08 mm

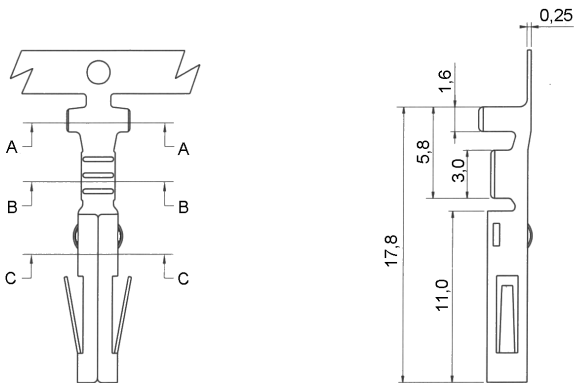
### Technische Daten / Technical Data:

Isolierkörper	Thermoplastischer Kunststoff, nach UL94V0
Insulator	Thermoplastic, rated UL94V0
Kontaktmaterial	Messing
Contact Material	Brass
Kabeldurchmesser	AWG 18-24
Applicable wire	AWG 18-24
Lötbarkeit	IEC512-12A
Solderability	IEC512-12A
Durchgangswiderstand	≤ 20 mOhm
Contact Resistance	≤ 20 mOhm
Isolationswiderstand	> 10 <sup>9</sup> Ohm
Insulation Resistance	> 10 <sup>9</sup> Ohm
Spannungsfestigkeit	1500 V <sub>AC</sub>
Test Voltage	1500 V <sub>AC</sub>
Nennspannung	250 V <sub>AC/DC</sub> max.
Current Voltage	250 V <sub>AC/DC</sub> max.
Nennstrom	5 A
Current Rating	5 A
Temperaturbereich	-25°C...+85°C
Temperature Range	-25°C...+85°C

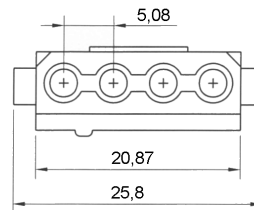


© W+P PRODUCTS

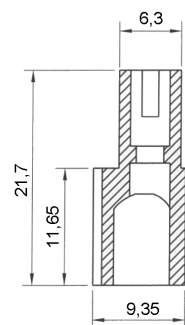
### Contact



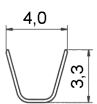
### Housing



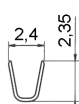
### SEC A-A



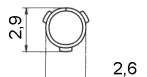
K



SEC A-A



SEC B-B



SEC C-C

### Series

539

### Contacts

04

04-pol.

### Type\*

1

1 = Buchsengehäuse  
housing  
2 = Buchsenkontakt  
contact

### Plating\*

50

50 = verzinkt (Standard)  
tin plated (Standard)  
00 = vergoldet (auf Anfrage)  
Gold plated (upon Request)

(\* Bestellbeispiel - Bitte durch Ihre Spezifikationen ersetzen.)

(\* Order example - To be replaced by your specifications.)

TEL.: +49 5223 98507-0  
FAX : +49 5223 98507-50

# W+P PRODUCTS

E-MAIL: sales@wpro.com  
INTERNET: www.wpro.com