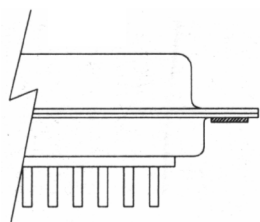


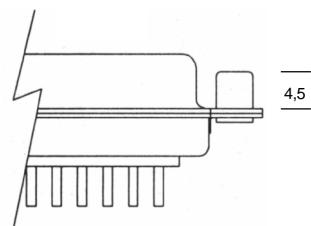
# D-SUB-Steckverbinder - Befestigungsoptionen

*D-SUB-Connector - Mounting Options*



Durchgangsloch 3,05 mm  
*through hole 3,05 mm*

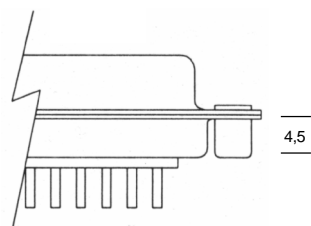
**Code: 0**



Gewindeniet UNC 4-40  
*UNC 4-40 thread rivet*  
Gewindeniet M3  
*M 3 thread rivet*

**Code: B1**

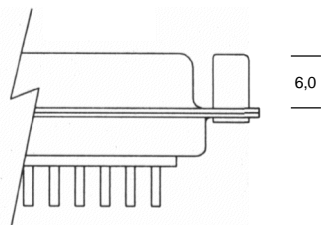
**Code: B2**



Gewindeniet UNC 4-40  
*UNC 4-40 thread rivet*  
Gewindeniet M3  
*M 3 thread rivet*

**Code: 1**

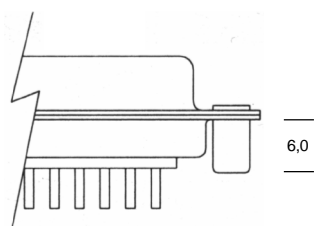
**Code: 2**



Gewindebolzen UNC 4-40  
*UNC 4-40 thread bolts*  
Gewindebolzen M3  
*M 3 thread bolts*

**Code: 3**

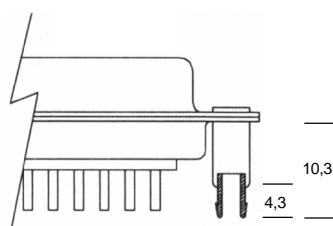
**Code: 4**



Gewindebolzen UNC 4-40  
*UNC 4-40 thread bolts*  
Gewindebolzen M3  
*M 3 thread bolts*

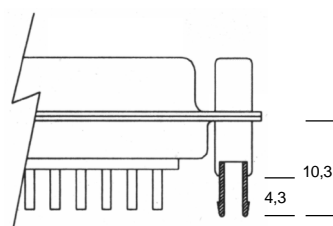
**Code: 5**

**Code: 6**



Boardlock mit UNC 4-40 Gewinde  
*boardlock type with UNC 4-40 thread*

**Code: BL**



Combilock mit UNC 4-40 Gewinde  
*combilock type with UNC 4-40 thread*

**Code: CL**

© W+P PRODUCTS

C