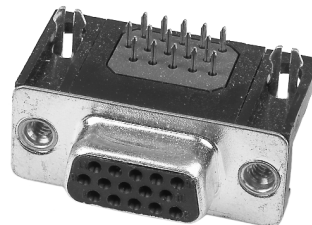


#### Technische Daten / Technical Data:

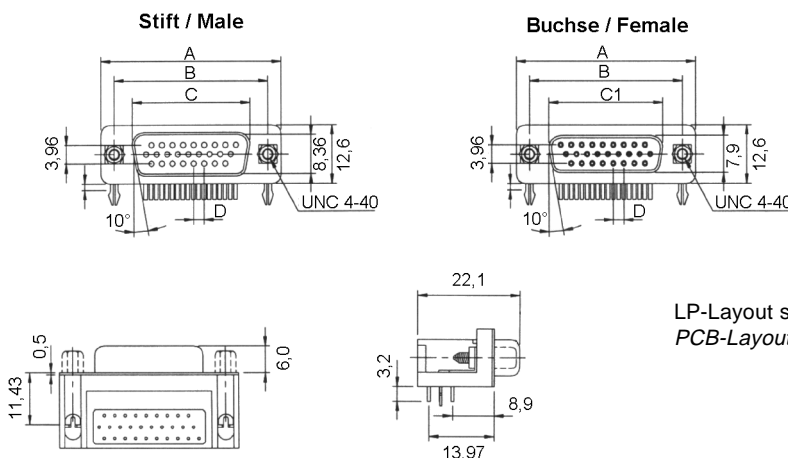
|  |  |
|--|--|
| Gehäuse<br><i>Shell</i>                              | Stahl vernickelt, verzinkt<br><i>steel, tin coated over nickel</i>   |
| Isolierkörper<br><i>Insulator</i>                    | Thermoplastischer Kunststoff, nach UL94V0<br><i>Thermoplastic, rated UL94V0</i>  |
| Kontaktmaterial<br><i>Contact Material</i>           | Kupferlegierung<br><i>copper alloy</i>   |
| Kontaktoberfläche<br><i>Contact Surface</i>          | Gold über Nickel<br><i>gold plated over nickel</i>   |
| Lötbarkeit<br><i>Solderability</i>                   | IEC512-12A<br><i>IEC512-12A</i>  |
| Durchgangswiderstand<br><i>Contact Resistance</i>    | ≤ 10 mOhm<br><i>≤ 10 mOhm</i>  |
| Isolationswiderstand<br><i>Insulation Resistance</i> | > 10 <sup>9</sup> Ohm<br><i>&gt; 10<sup>9</sup> Ohm</i>  |
| Spannungsfestigkeit<br><i>Test Voltage</i>           | 1000 V <sub>DC</sub><br><i>1000 V<sub>DC</sub></i>   |
| Nennstrom<br><i>Current Rating</i>                   | 3 A<br><i>3 A</i>  |
| Temperaturbereich<br><i>Temperature Range</i>        | -55°C...+125°C<br><i>-55°C...+125°C</i>  |
| Verarbeitung<br><i>Processing</i>                    | Wellen-Lötverfahren; weitere Informationen in Kapitel T<br><i>Wave-Soldering, further informations in chapter T</i>      |
| Güteklasse<br><i>Quality Class</i>                   | GK 3, min. 50 Steckzyklen, andere GK auf Anfrage<br><i>Quality class 3, min. 50 cycles, other qualities upon request</i> |



© W+P PRODUCTS

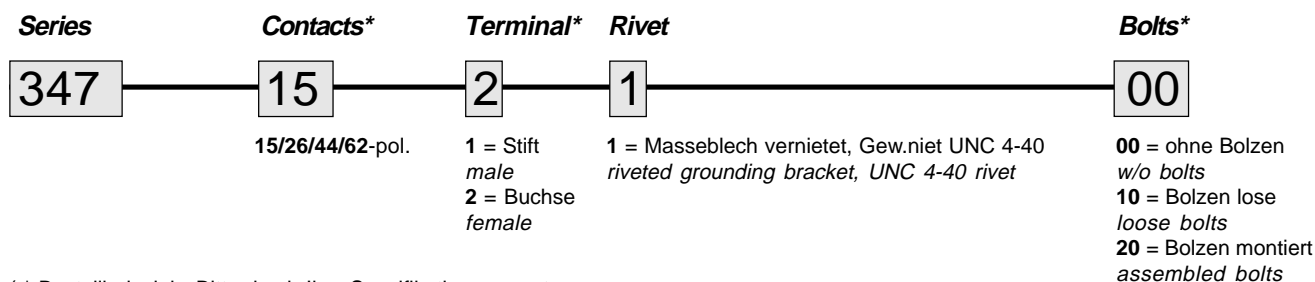
C

|                 |                   |
|-----------------|-------------------|
| Impedanz        | 16 mOhm - 25 MHz  |
| Impedance       | 32 mOhm - 100 MHz |
| Frequenzbereich | 300 MHz           |
| Frequency Field |                   |



LP-Layout siehe Seite C23  
PCB-Layout shown on page C23

| Dimensions (mm) |       |       |       |       |      |
|-----------------|-------|-------|-------|-------|------|
| Contacts        | A     | B     | C     | C1    | D    |
| 15              | 30,80 | 24,99 | 16,92 | 16,33 | 2,29 |
| 26              | 39,10 | 33,32 | 25,25 | 24,66 | 2,29 |
| 44              | 53,00 | 47,04 | 38,25 | 37,66 | 2,29 |
| 62              | 69,30 | 63,50 | 55,42 | 54,84 | 2,41 |



(\* Bestellbeispiel - Bitte durch Ihre Spezifikationen ersetzen.  
\* Order example - To be replaced by your specifications.)

## Wellen-Lötverfahren Wave-Soldering

Bauteile sollten bei 260°C für max. 5 Sekunden verarbeitet werden.  
*Items should be soldered at 260°C for max. 5 seconds.*

Empfohlenes Wellen-Lötprofil:  
*Recommended Wave-Soldering profile:*

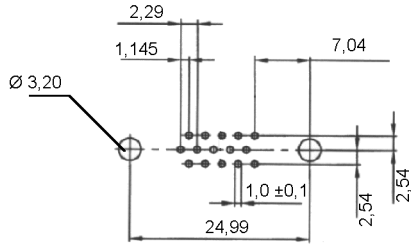


# LP-Layout HD D-SUB - 90° gewinkelt - Ansicht: Bestückungsseite

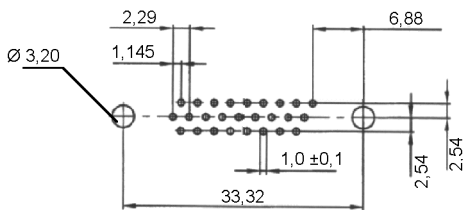
PCB-Layout HD D-SUB 90° Right Angled - View: Assembly Side

Stift / Male

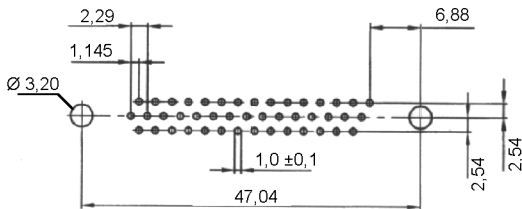
15-pol.



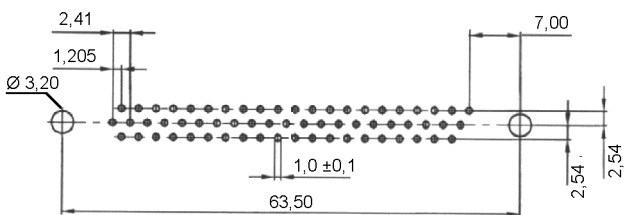
26-pol.



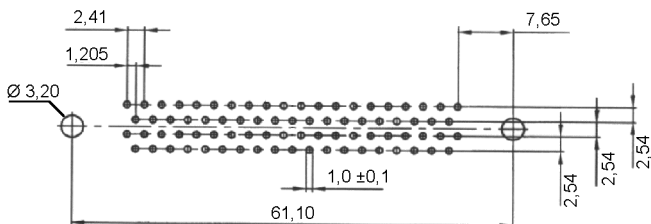
44-pol.



62-pol.

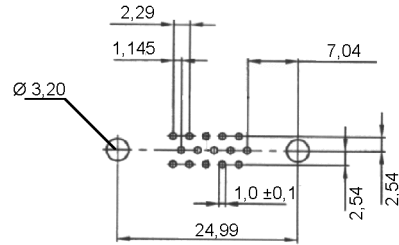


78-pol.

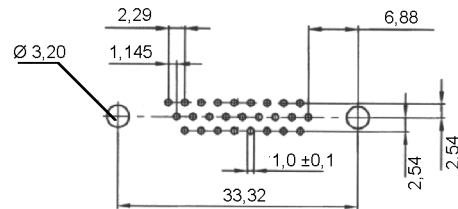


Buchse / Female

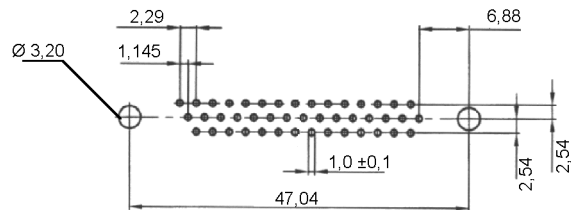
15-pol.



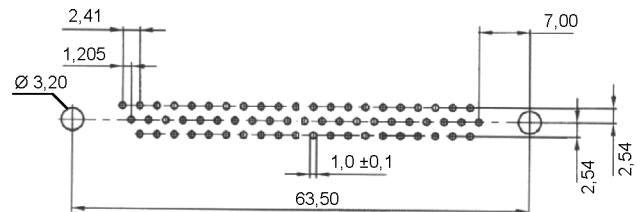
26-pol.



44-pol.



62-pol.



78-pol.

