

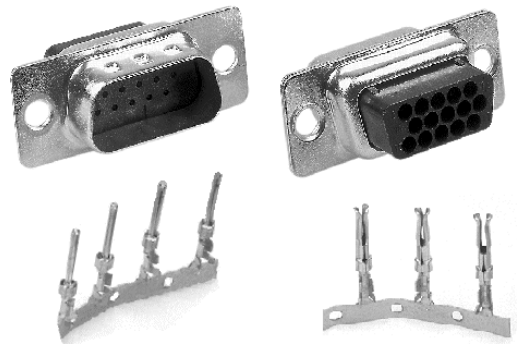
116

D-SUB Steckverbinder - High Density - Crimp Version

D-SUB Connector - High Density - Crimp Type

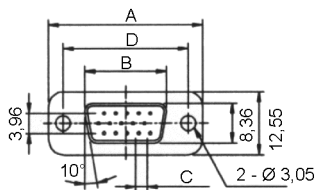
Technische Daten / Technical Data:

Gehäuse	Stahl vernickelt, verzinkt
Shell	steel, tin coated over nickel
Isolierkörper	Thermoplastischer Kunststoff, nach UL94V0
Insulator	Thermoplastic, rated UL94V0
Kontaktmaterial	Kupferlegierung
Contact Material	copper alloy
Kontaktoberfläche	Gold über Nickel
Contact Surface	gold plated over nickel
Lötbarkeit	IEC512-12A
Solderability	IEC512-12A
Durchgangswiderstand	≤ 10 mOhm
Contact Resistance	≤ 10 mOhm
Isolationswiderstand	> 10 ⁹ Ohm
Insulation Resistance	> 10 ⁹ Ohm
Spannungsfestigkeit	1000 V _{DC}
Test Voltage	1000 V _{DC}
Nennstrom	3 A
Current Rating	3 A
Temperaturbereich	-55°C...+125°C
Temperature Range	-55°C...+125°C
Verarbeitung	Wellen-Lötverfahren; weitere Informationen in Kapitel T
Processing	Wave-Soldering, further informations in chapter T
Güteklasse	GK 3, min. 50 Steckzyklen, andere GK auf Anfrage
Quality Class	Quality class 3, min. 50 cycles, other qualities upon request

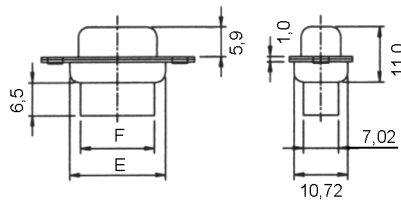
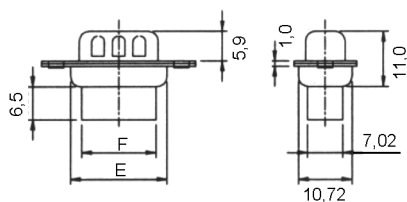
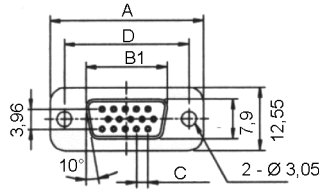


© W+P PRODUCTS

Stift / Male

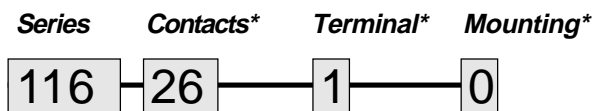


Buchse / Female



Dimensions (mm)						
Contacts	A	B	B1	C	D	E
15	30,80	16,92	16,33	2,29	24,99	19,28
26	39,10	25,50	24,66	2,29	33,32	27,51
44	53,00	38,96	36,38	2,29	47,04	41,10
62	69,30	55,42	54,84	2,41	36,50	57,30

Crimp-Kontakte für Serie 116	Bestellnr.
Crimp-Contacts for Series 116	Ordering number
AWG 24-28 Stift	116-24-1-3-3 *
AWG 24-28 male	
AWG 24-28 Buchse	116-24-2-3-3 *
AWG 24-28 female	
* 10K pro Rolle / 10K per reel	
Einzelkontakt und 500 Stück/Rolle auf Anfrage single contact and 500 pieces/reel on request	



15/26/44/62-pol.

1 = Stift
male

2 = Buchse
female

laut Übersicht Seite C31
see options on page C31

(* Bestellbeispiel - Bitte durch Ihre Spezifikationen ersetzen.

* Order example - To be replaced by your specifications.)

TEL.: +49 5223 98507-0
FAX : +49 5223 98507-50

W+P PRODUCTS

E-MAIL: sales@wpro.com
INTERNET: www.wpro.com

Wellen-Lötverfahren Wave-Soldering

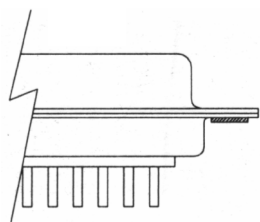
Bauteile sollten bei 260°C für max. 5 Sekunden verarbeitet werden.
Items should be soldered at 260°C for max. 5 seconds.

Empfohlenes Wellen-Lötprofil:
Recommended Wave-Soldering profile:



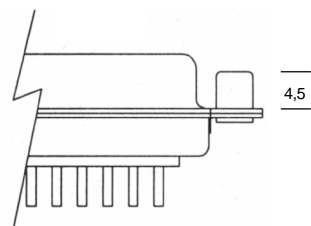
D-SUB-Steckverbinder - Befestigungsoptionen

D-SUB-Connector - Mounting Options



Durchgangsloch 3,05 mm
through hole 3,05 mm

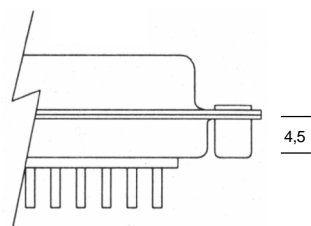
Code: 0



Gewindeniet UNC 4-40
UNC 4-40 thread rivet
Gewindeniet M3
M 3 thread rivet

Code: B1

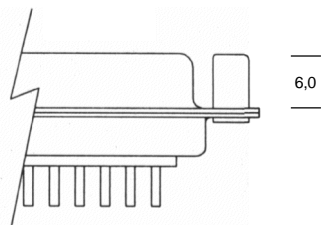
Code: B2



Gewindeniet UNC 4-40
UNC 4-40 thread rivet
Gewindeniet M3
M 3 thread rivet

Code: 1

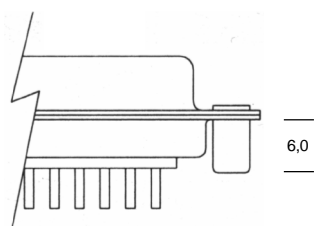
Code: 2



Gewindebolzen UNC 4-40
UNC 4-40 thread bolts
Gewindebolzen M3
M 3 thread bolts

Code: 3

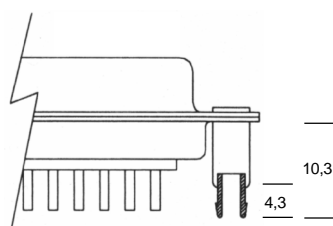
Code: 4



Gewindebolzen UNC 4-40
UNC 4-40 thread bolts
Gewindebolzen M3
M 3 thread bolts

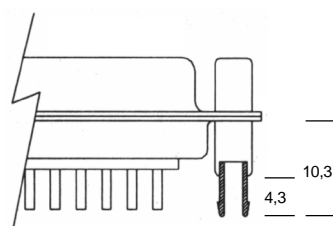
Code: 5

Code: 6



Boardlock mit UNC 4-40 Gewinde
boardlock type with UNC 4-40 thread

Code: BL



Combilock mit UNC 4-40 Gewinde
combilock type with UNC 4-40 thread

Code: CL

© W+P PRODUCTS

C