

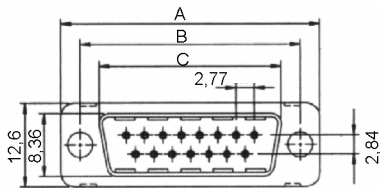
Technische Daten / Technical Data:

Gehäuse	Stahl vernickelt, verzinkt
Shell	steel, tin coated over nickel
Isolierkörper	Thermoplastischer Kunststoff, nach UL94V0
Insulator	Thermoplastic, rated UL94V0
Kontaktmaterial	Kupferlegierung
Contact Material	copper alloy
Kontaktoberfläche	Gold über Nickel
Contact Surface	gold plated over nickel
Lötbarkeit	IEC512-12A
Solderability	IEC512-12A
Durchgangswiderstand	≤ 10 mOhm
Contact Resistance	≤ 10 mOhm
Isolationswiderstand	> 10 ⁹ Ohm
Insulation Resistance	> 10 ⁹ Ohm
Spannungsfestigkeit	1000 V _{AC}
Test Voltage	1000 V _{AC}
Nennstrom	5 A
Current Rating	5 A
Temperaturbereich	-55°C...+125°C
Temperature Range	-55°C...+125°C
Güteklasse	GK 3, min. 50 Steckzyklen, andere GK auf Anfrage
Quality Class	Quality class 3, min. 50 cycles, other qualities upon request

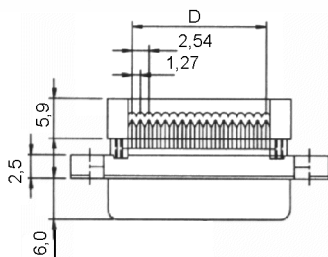
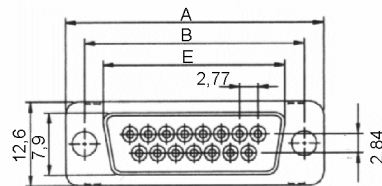


© W+P PRODUCTS

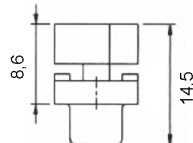
Stift / Male



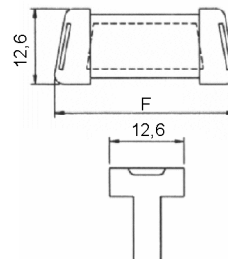
Buchse / Female



Dim. after Assembly



Strain Relief



Dimensions (mm)						
Contacts	A	B	C	D	E	F
09	30,89	24,99	16,92	10,16	16,33	23,03
15	39,14	33,32	25,25	17,78	24,66	30,65
25	53,09	47,05	38,96	30,48	38,38	43,35
37	69,39	63,50	55,45	45,72	54,84	58,59

Series	Contacts*	Terminal*	Mounting*	Relief*	Plating
114	37	1	00	10	60
	09/15/25/37-pol.	1 = Stift male 2 = Buchse female	00 = Durchgangsloch through hole 10 = UNC 4-40 Gew.niet w/ UNC 4-40 thread 20 = M3 Gew.niet w/ M3 thread	00 = ohne Zugentlastung w/o strain relief 10 = mit Zugentlastung w/ strain relief	60 = sel. Au/Sn duplex plating Au/Sn

(* Bestellbeispiel - Bitte durch Ihre Spezifikationen ersetzen.
* Order example - To be replaced by your specifications.)