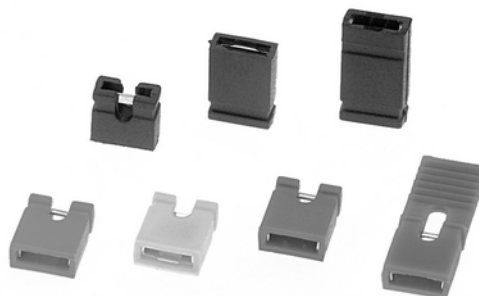


## Kurzschlussbrücken RM 2,54mm, für 0,635mm Vierkantstifte Mini Jumpers, 2.54mm Pitch, for 0.635mm Square Pins

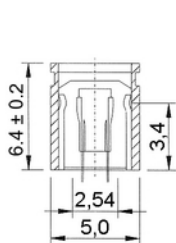
### Technische Daten / Technical Data

Isolierkörper <i>Insulator</i>	Thermoplastischer Kunststoff, nach UL94 V-0 <i>Thermoplastic, rated UL94 V-0</i>
Kontaktmaterial <i>Contact Material</i>	Phosphorbronze <i>Phosphor bronze</i>
Kontaktfläche <i>Contact Surface</i>	Gold über Nickel <i>Gold over nickel</i>
Durchgangswiderstand <i>Contact Resistance</i>	< 30mΩ <i>&lt; 30mΩ</i>
Isolationswiderstand <i>Insulation Resistance</i>	> 1000MΩ <i>&gt; 1000MΩ</i>
Spannungsfestigkeit <i>Test Voltage</i>	500V <sub>AC</sub> <i>500V<sub>AC</sub></i>
Nennstrom <i>Current Rating</i>	3A <i>3A</i>
Temperaturbereich <i>Temperature Range</i>	-55°C ... +85°C <i>-55°C ... +85°C</i>

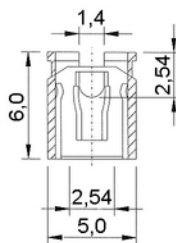
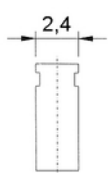


© W+P PRODUCTS

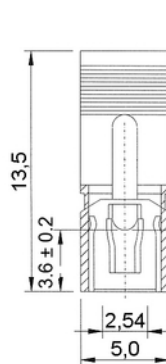
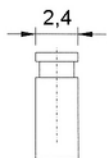
Einsetzbar für Vierkantstifte 0,635mm.  
*Accept rectangular pins 0.635mm.*



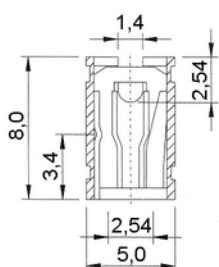
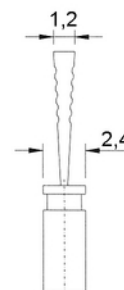
Type 101



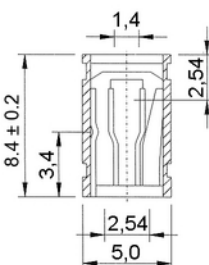
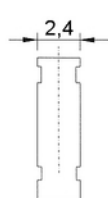
Type 201



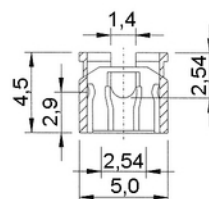
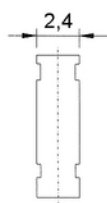
Type 301



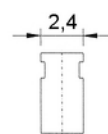
Type 401



Type 501



Type 601



**Series**

**165**

**Type\***

**101**

101 Geschlossen  
*Closed*  
201 Offen  
*Open*  
301 Offen mit Lasche  
*Open with latch*  
401 Offen  
*Open*  
501 Geschlossen  
*Closed*  
601 Offen  
*Open*

**Colour\***

**10**

10 Schwarz  
*Black*  
20 Rot  
*Red*  
30 Blau  
*Blue*  
40 Grün  
*Green*  
50 Gelb  
*Yellow*  
60 Grau  
*Grey*

**Plating**

**00**

00 Vergoldet  
*Gold plated*

Farboptionen für Serien 101 und 201.  
*Colour options for series 101, 201 only.*

\* Dies ist ein **Bestellbeispiel** - bitte durch Ihre Spezifikationen ersetzen.  
\* **This is an order example** - please replace by your specifications.