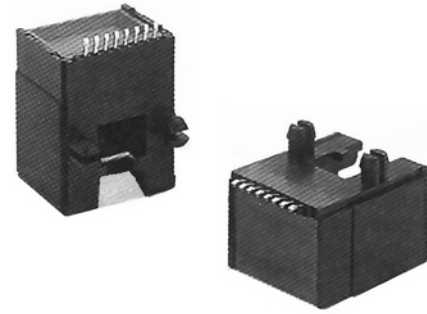
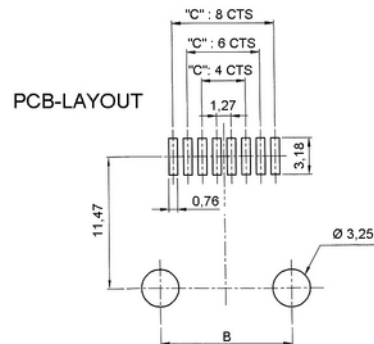
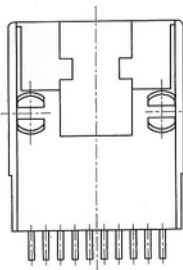
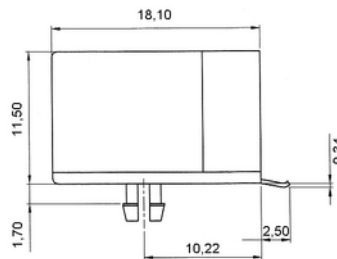
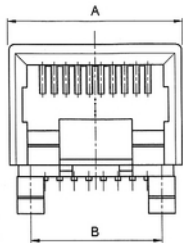


Technische Daten / Technical Data

Isolierkörper	Thermoplastischer Kunststoff, nach UL94 V-0
Insulator	Thermoplastic, rated UL94 V-0
Kontaktmaterial	Kupferlegierung
Contact Material	Copper alloy
Kontaktoberfläche	Gold über Nickel (siehe Optionen unten)
Contact Surface	Gold over nickel (see options below)
Oberfläche Lötanschluss	Zinn über Nickel
Plating Solder Side	Tin plated over nickel
Lötbarkeit	IEC 60512-12A
Solderability	IEC 60512-12A
Durchgangswiderstand	< 20mΩ
Contact Resistance	< 20mΩ
Isolationswiderstand	> 500MΩ
Insulation Resistance	> 500MΩ
Spannungsfestigkeit	1kV _{RMS}
Test Voltage	1kV _{RMS}
Nennstrom	1A
Current Rating	1A
Temperaturbereich	-25°C ... +85°C
Temperature Range	-25°C ... +85°C
Verarbeitung	250°C für 20s
Processing	250°C for 20s



© W+P PRODUCTS



Series	Positions*	Contacts*	Plating*	Packaging*
3014	04	04	10	TR
Cat. 3	04 A=11,21 B=7,62 C=3,81mm ==> 06 A=12,96 B=10,16 C=6,35mm ==> 08 A=15,03 B=11,43 C=8,89mm ==>	04 04/06 06/08	10 0,15µm Gold 20 0,38µm Gold 30 0,76µm Gold 40 1,25µm Gold	00 TR

Lieferformen / Packaging Options:

00 Schüttgut / Bulk goods
TR Tape & Reel / Tape & Reel

* Dies ist ein **Bestellbeispiel** - bitte durch Ihre Spezifikationen ersetzen.
* This is an **order example** - please replace by your specifications.

TEL +49 5223 98507-0
FAX +49 5223 98507-50

W+P PRODUCTS

E-MAIL sales@wpro.com
WEBSITE www.wpro.com

Produktübersicht Modular Steckverbinder / Kabelkonfektionen Product Overview Modular Connectors / Cable Assemblies

Single Port/Multi Port 658 / 6580

- Einlöt- oder SMT-Versionen
- 1 - 8 seitliche Eingänge
- auch mit LED-Signalleuchten in Farben gelb, grün, rot, bicolor
- voll geschirmt mit/ohne Erdungslasche

Single Port/Multi Port 658 / 6580

- Solder-in oder SMT mounting
- 1 - 8 side entries
- LED optical indicators in colours yellow, green, red, bi-colour
- Fully shielded with optional ground latch

Beschaltete Buchsen 655

- Single oder Multi Ports
- Gigabit Ethernet
- 10/100 Mbit Ethernet
- Übertragerschaltung und weitere Beschaltungen ...

Jacks with built-in circuits 655

- Single or Multi Ports
- Gigabit Ethernet
- 10/100 Mbit Ethernet
- Transformer circuit and even more circuits ...

M-Typ Top Entry 3018

- SMT-Technik
- Eingang von oben
- 6P6C / 8P8C

M-Type Top Entry 3018

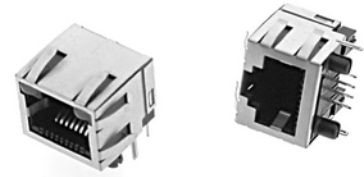
- SMT Connectors
- Top Entry
- 6P6C / 8P8C

Weitere Varianten

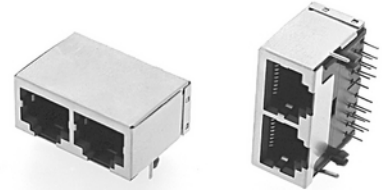
- RJ-45 Keystone Jacks
- Up-Latch Varianten
- RJ-45 Combi Ports mit USB, eSata, ...
- Kabelkonfektionen
- Kundenspezifische Lösungen

More Variations

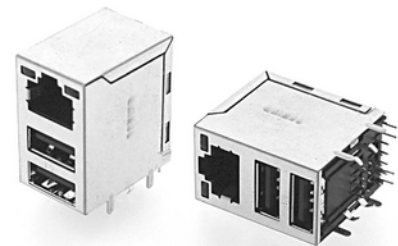
- RJ-45 Keystone Jacks
- Up-Latch Versions
- RJ-45 Combi Ports with USB, eSata, ...
- Cable Assemblies
- Customized Solutions



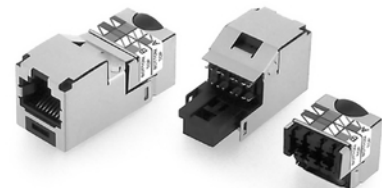
RJ-45 mit LED's, geschirmt
RJ-45 with LED's, shielded



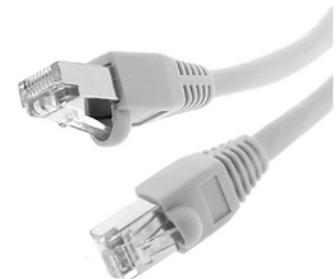
RJ-45 Multi Port
RJ-45 Multi Port



RJ-45 Combi Port
RJ-45 Combi Port



RJ-45 Keystone Jacks
RJ45 Keystone Jacks



RJ-45 Kabelkonfektion
RJ-45 Cable Assemblies