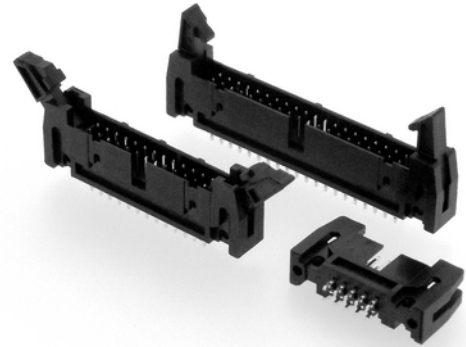


138PF

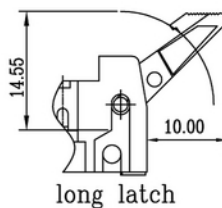
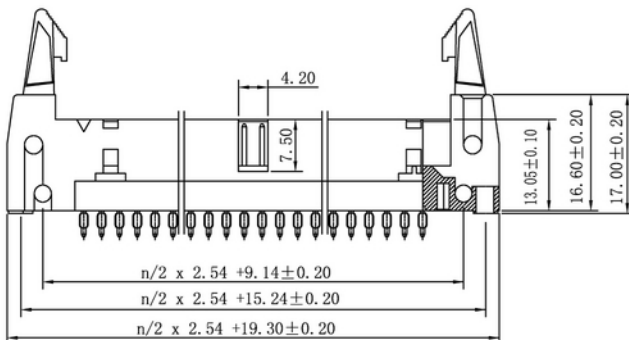
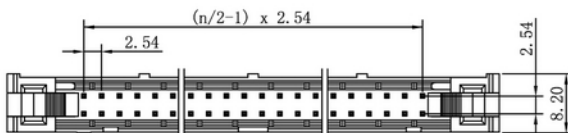
Wannenstiflleisten mit Verriegelung, RM 2,54mm, Press-Fit Box Headers with Latches, 2.54mm Pitch, Press-Fit

Technische Daten / Technical Data

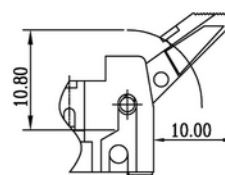
Gehäuse	Thermoplastischer Kunststoff, nach UL94 V-0
Shell	Thermoplastic, rated UL94 V-0
Kontaktmaterial	Vierkantstift 0,635mm, Kupferlegierung
Contact Material	Square pin 0.635mm, copper alloy
Kontaktoberfläche	Lt. Oberflächenoptionen, über Ni (1,3 ... 2,5µm)
Contact Surface	Acc. to options (see below), over Ni (1.3 ... 2.5µm)
Durchgangswiderstand	< 20mΩ
Contact Resistance	< 20mΩ
Isolationswiderstand	> 1000MΩ
Insulation Resistance	> 1000MΩ
Spannungsfestigkeit	500V _{AC}
Test Voltage	500V _{AC}
Nennspannung	250V _{AC}
Voltage Rating	250V _{AC}
Nennstrom	3A
Current Rating	3A
Temperaturbereich	-40°C ... +105°C
Temperature Range	-40°C ... +105°C
Verarbeitung	Einpresstechnik
Processing	Press-Fit



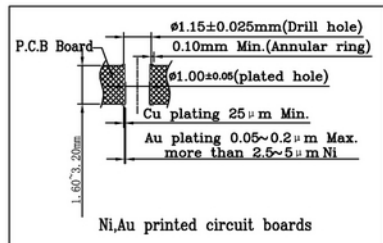
© W+P PRODUCTS



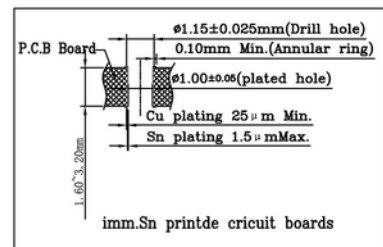
long latch



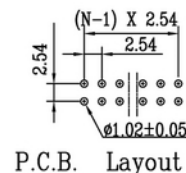
short latch



Ni,Au printed circuit boards



imm.Sn printde circuit boards



P.C.B. Layout

Serie	Contacts*	Latches*	Plating*
138PF	40	10	60
	10/14/16/20/ 26/34/40/50	00 Ohne Hebel W/o latches 10 Kurze Hebel Short latches 20 Lange Hebel (für Gegenstecker mit Zugentlastung) Long latches (for mating connectors with strain relief)	00 Vergoldet Gold plated 60 Au/Sn Au/Sn

* Dies ist ein **Bestellbeispiel** - bitte durch Ihre Spezifikationen ersetzen.
* This is an **order example** - please replace by your specifications.

TEL +49 5223 98507-0
FAX +49 5223 98507-50

W+P PRODUCTS

E-MAIL sales@wpro.com
WEBSITE www.wpro.com